

OBSTETRICS

Expanding the scope of noninvasive prenatal testing: detection of fetal microdeletion syndromes

Q16 Ronald J. Wapner, MD; Joshua E. Babiarz, PhD; Brynn Levy, MSc (Med), PhD; Melissa Stosic, MS; Bernhard Zimmermann, PhD; Styrmir Sigurjonsson, PhD; Nicholas Wayham, BS; Allison Ryan, PhD; Milena Banjevic, PhD; Phil Lacroute, PhD; Jing Hu, PhD; Megan P. Hall, PhD; Zachary Demko, PhD; Asim Siddiqui, PhD; Q1 Matthew Rabinowitz, PhD; Susan J. Gross, MD; Matthew Hill, PhD; Peter Benn, DSc

OBJECTIVE: The purpose of this study was to estimate the performance of a single-nucleotide polymorphism (SNP)-based noninvasive prenatal test for 5 microdeletion syndromes.

STUDY DESIGN: Four hundred sixty-nine samples (358 plasma samples from pregnant women, 111 artificial plasma mixtures) were amplified with the use of a massively multiplex polymerase chain reaction, sequenced, and analyzed with the use of the Next-generation Aneuploidy Test Using SNPs algorithm for the presence or absence of deletions of 22q11.2, 1p36, distal 5p, and the Prader-Willi/Angelman region.

RESULTS: Detection rates were 97.8% for a 22q11.2 deletion (45/46) and 100% for Prader-Willi (15/15), Angelman (21/21), 1p36

deletion (1/1), and cri-du-chat syndromes (24/24). False-positive rates were 0.76% for 22q11.2 deletion syndrome (3/397) and 0.24% for cri-du-chat syndrome (1/419). No false positives occurred for Prader-Willi (0/428), Angelman (0/442), or 1p36 deletion syndromes (0/422).

CONCLUSION: SNP-based noninvasive prenatal microdeletion screening is highly accurate. Because clinically relevant microdeletions and duplications occur in >1% of pregnancies, regardless of maternal age, noninvasive screening for the general pregnant population should be considered.

Key words: microdeletion, noninvasive prenatal testing, single-nucleotide polymorphism

Cite this article as: Wapner RJ, Babiarz JE, Levy B, et al. Expanding the scope of noninvasive prenatal testing: detection of fetal microdeletion syndromes. *Am J Obstet Gynecol* 2014;212:●●●●.

The discovery in the maternal circulation of cell-free DNA (cfDNA) of fetal/placental origin has led to a revolution in prenatal screening.¹⁻³ Common whole-chromosome fetal aneuploidies can now be detected with high sensitivity and specificity⁴ and have

facilitated a significant reduction in the number of invasive diagnostic procedures that have been performed. In the United States, 2 noninvasive prenatal testing (NIPT) approaches have been commercialized: quantitative “counting” that uses massive or targeted parallel

sequencing⁵⁻⁷ and a single-nucleotide polymorphism (SNP)-based approach that relies on the identification of maternal and fetal allele distributions.⁸⁻¹³ Both methods can detect pregnancies at high risk for trisomy 21 (Down syndrome), trisomy 18, trisomy 13, and sex

From the Departments of Obstetrics and Gynecology and Pathology, College of Physicians and Surgeons, Columbia University, New York, NY (Drs Wapner and Levy); Natera Inc., San Carlos, CA (Drs Babiarz, Zimmermann, Sigurjonsson, Ryan, Banjevic, Lacroute, Hu, Hall, Demko, Siddiqui, Rabinowitz, Gross, and Hill, Ms Stosic, and Mr Wayham); and Division of Human Genetics, Department of Genetics and Developmental Biology, University of Connecticut Health Center, Farmington, CT (Dr Benn).

Received July 10, 2014; revised Nov. 5, 2014; accepted Nov. 30, 2014.

Privately funded by the investors of Natera.

J.E.B., M.S., B.Z., S.S., N.W., A.R., M.B., P.L., J.H., M.P.H., Z.D., A.S., M.R., S.J.G., and M.H. are/were employees of Natera and hold stock or options to hold stock in the company; B.L. and P.B. are paid consultants to Natera; R.J.W. has no conflicts to declare.

Presented at the 18th International Conference on Prenatal Diagnosis and Therapy, Brisbane, QLD, Australia, July 20-23, 2014; 13th World Congress in Fetal Medicine, Fetal Medicine Foundation, Nice, France, June 29–July 3, 2014; 47th European Congress on Perinatal Medicine, Florence, Italy, June 4-7, 2014; 47th annual European Human Genetics Conference, European Society of Human Genetics, Milan, Italy, May 31–June 3, 2014; Prenatal Molecular Diagnostics Europe, Cambridge Healthtech Institute, Lisbon, Portugal, May 12-13, 2014; Annual Clinical Meeting of the American College of Obstetricians and Gynecologists, Chicago, IL, April 26-30, 2014; and ACMG Annual Clinical Genetics Meeting, Nashville, TN, March 25-29, 2014.

Corresponding author: Peter Benn, DSc. benn@uchc.edu

0002-9378 © 2014 The Authors. Published by Elsevier Inc. on behalf of ASCRS and ESCRS. This is an open access article under the CC BY-NC-ND license (<http://creativecommons.org/licenses/by-nc-nd/3.0/>). • <http://dx.doi.org/10.1016/j.ajog.2014.11.041>

chromosome abnormalities. The SNP-based approach is also able to detect triploidy.^{9,11}

Subchromosomal abnormalities (microdeletions and duplications) may result in physical and/or intellectual impairments that can be more severe than whole chromosome abnormalities. Unlike the risks of aneuploidy that is associated with nondisjunction, the incidence of subchromosomal copy number variations is independent of maternal age. Clinically relevant microdeletions and duplications occur in 1-1.7% of all structurally normal pregnancies.¹⁴ In younger women, the risk for a clinically significant deletion exceeds the risk for Down syndrome. Because some infants with subchromosomal abnormalities may benefit from early therapeutic intervention,¹⁵⁻¹⁷ prenatal detection is important for optimal management. In support of this, it is recommended that chromosome microarray analysis be offered to all women who undergo invasive diagnostic testing.¹⁸ However, with the introduction of NIPT for aneuploidy screening, many women who previously would have had invasive testing are choosing to avoid these procedures because of the small risk of pregnancy loss.^{3,19}

Submicroscopic genomic alterations are harder to detect noninvasively because of their small size. A small proportion may be identified incidentally through traditional serum and ultrasound screening, but these tests were not designed to screen for these anomalies. The introduction of a highly accurate noninvasive prenatal screening test that would identify women who are at high risk for microdeletions or duplications therefore would be useful. Recently, proof-of-principle studies that used shotgun or whole-genome sequencing reported the detection of subchromosomal microdeletions and microduplications.²⁰⁻²³ However, these approaches were limited by the requirement for exceptionally high sequence reads, and interpretation was complicated by the identification of variants of unknown clinical

TABLE 1

Samples used in the main cohort along with the sample deletion sizes

Samples	Sample deletion size	n
Pregnancy samples		
DiGeorge deletion	arr[hg18] 22q11.21(17,010,000-20,130,000)x1	1
DiGeorge deletion	arr[hg18] 22q11.21(17,020,000-20,130,000)x1	1
DiGeorge deletion	46,XX,nuc ish(HIRAx1)	1
Cri-du-chat deletion	46,XX,del(5)(p15.1p15.3)	1
Cri-du-chat deletion	46,XY,del(5)(p14.2)	1
1p36 deletion	46,XY,del(1)(p36.1)	1
46,XX and 46,XY		352
PlasmArt samples: born triads		
DiGeorge deletion	arr[hg18] 22q11.2(17,270,000- 19,810,000)x1	22
DiGeorge deletion	arr[hg18] 22q11.2(16,950,000-20,250,000)x1	22
Cri-du-chat deletion	arr[hg18] 5p15.33p14.1(91,100-29,500,000)x1	22
46,XX and 46,XY		7
PlasmArt samples: cell lines		
Prader-Willi deletion	arr[hg18] 15q11.2q13.1(20,310,000-27,130,000)x1	16
Angelman deletion	arr[hg18] 15q11.2q13.1(20,310,000-27,220,000)x1	22

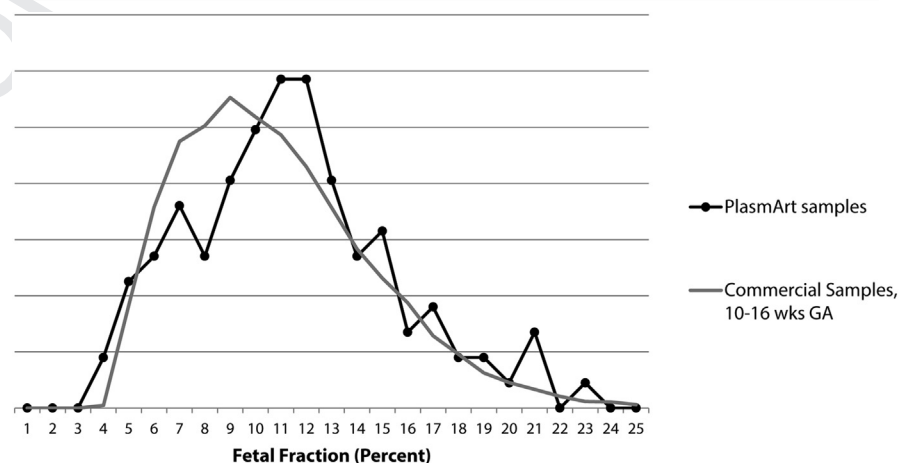
Wapner. Noninvasive screening for fetal microdeletion syndromes. *Am J Obstet Gynecol* 2014.

significance. Here, we used a targeted SNP-based approach⁹⁻¹³ to detect the larger deletions that underlie 5 microdeletion syndromes with clinically severe phenotypes.

MATERIALS AND METHODS

Initial validation studies were performed with genomic DNA that had been isolated from 40 characterized cell lines to demonstrate that the SNP-targeted assay

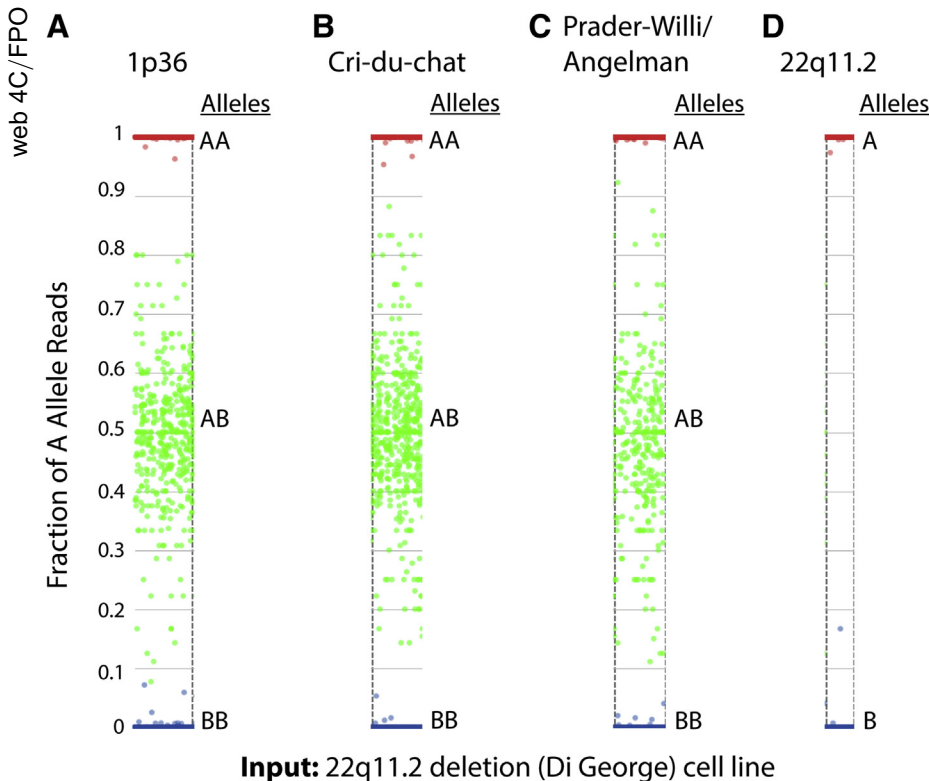
FIGURE 1
Fetal fraction distribution



Distribution of the 111 PlasmArt samples and of 19,910 consecutive commercial samples from 10-16 weeks' gestation.

Wapner. Noninvasive screening for fetal microdeletion syndromes. *Am J Obstet Gynecol* 2014.

FIGURE 2
Graphic representation of sequencing data



Data were obtained from analysis of genomic DNA isolated from cells with the 22q11.2 deletion, interrogated for **A**, the 1p36 deletion, **B**, the cri-du-chat deletion, **C**, the Prader-Willi/Angelman deletion, and **D**, the 22q11.2 deletion. Note that this is one way of visualizing the data and is not how the algorithm makes copy number calls. For all plots, single-nucleotide polymorphisms (SNPs) are assumed to be dimorphic and are labeled as A or B. The fraction of A allele reads (*y*-axis) is plotted against the position of each SNP along the chromosome of interest (*x*-axis); each spot corresponds to a single SNP. Spots are colored according to genotype: AA is red; AB is green, and BB is blue. Genotypes are indicated to the right of the plots; **A-C**, SNP plots reveal 2 copies in the 1p36, cri-du-chat, and Prader-Willi/Angelman regions. Homozygous alleles (AA and BB) are associated tightly with the plot's upper and lower limits, respectively. Heterozygous alleles (AB) cluster near the center of the plot, which indicates 2 copies of the chromosome in the interrogated regions. **D**, SNP plots reveal 1 copy in the 22q11.2 region. The lack of heterozygous alleles (AB) identifies 1 copy of the 22q11.2 region; A and B alleles are associated tightly with the plot's upper and lower limits, respectively.

Wapner. Noninvasive screening for fetal microdeletion syndromes. *Am J Obstet Gynecol* 2014.

was capable of detecting the presence or absence of 22q11.2, 1p36, cri-du-chat, Prader-Willi, and Angelman deletions. These cell lines included 7 with 22q11.2 deletions, 19 with 5p deletions (cri-du-chat syndrome), 10 with 15q11-13 deletions (3 with Angelman syndrome and 7 with Prader-Willi syndrome), and 4 with no deletions.

After validation of the SNP-targeted assay, a cohort of 469 test samples was

evaluated (Table 1). This included 6 maternal plasma samples from pregnant woman in which the fetus had a microdeletion (3 with 22q11.2 deletions, 2 with 5p deletions, and 1 with a 1p36 deletion), 352 unaffected pregnancy plasmas, and 111 artificial DNA mixtures (PlasmArts). Seventy-three of the PlasmArts were generated from DNA derived from 2 individuals with 22q11.2 deletions (1 with a 5p deletion, and one

unaffected child), each of which was diluted into matched maternal DNA. Thirty-eight samples were generated from genomic DNA isolated from two 15q- cell lines (1 Angelman, and 1 Prader-Willi) and the corresponding maternal cell lines. All cell lines were obtained from the Coriell Cell Repository (Camden, NJ). Patients who provided samples were enrolled at prenatal and postnatal care centers under Institutional Review Board-approved protocols (Western Institutional Review Board protocol number: 12-014-NPT), pursuant to local regulations.

Genomic DNA for PlasmArt mixtures were isolated from the buffy coats from mother and child pairs or from paired mother and child cell lines. These DNA preparations were cleaved into inter-nucleosomal fragments of roughly 150 base pairs and multiples thereof with the use of a proprietary reaction that included micrococcal nuclease (New England Biolabs, Ipswich, MA).^{24,25} Because fetal cfDNA exists in vivo mainly as mono-nucleosomal fragments,²⁶ child DNA of approximately 150 base pairs was isolated using Solid Phase Reversible Immobilization beads (Agencourt Biosciences, Beverly, MA). Maternal genomic DNA was not size purified because maternal cfDNA exists as a nucleosomal ladder.²⁶ Child DNA was titrated into the corresponding maternal DNA to achieve artificial mixtures with "fetal" fractions that ranged from 3.8-33%, which was a similar distribution to that observed in maternal plasma clinical samples. The "fetal" fraction distribution of these samples is shown in Figure 1; for comparison, the fetal fraction distribution from 19,910 consecutive maternal plasma samples from women at 10-16 weeks of gestation is also shown.

All samples, including maternal and (T1) (when available) paternal samples,⁹⁻¹³ underwent targeted multiplex polymerase chain reaction and were sequenced;^{Q4} the data were analyzed with the Next-Generation Aneuploidy Test Using SNPs (NATUS) algorithm as described previously,⁹⁻¹³ with the following alterations: a unique set of primers were designed to amplify 4128 SNPs in the regions-of-interest (672 SNPs targeting

TABLE 2

Individual and combined detection rate and false-positive rate for pregnancy plasmas and PlasmArt samples

Disorder	Affected (n = 6 plasma; 108 PlasmArt samples)				Unaffected (n = 335 plasma; 108 PlasmArt samples)			
	Pregnancy plasma, n/N	PlasmArt, n/N	Total, n/N	Analytic detection rate, % (95% CI)	Pregnancy plasma, n/N	PlasmArt, n/N	Total, n/N	False-positive rate, % (95% CI)
22q11.2 del	2/3	43/43	45/46	97.8 (88.5–99.9)	3/332	0/65	3/397	0.76 (0.1–2.2)
Prader-Willi		15/15	15/15	100	0/335	0/93	0/428	0
Angelman		21/21	21/21	100	0/335	0/87	0/422	0
1p36 del	1/1		1/1	100	0/334	0/108	0/442	0
Cri-du-chat	2/2	22/22	24/24	100	1/333	0/86	1/419	0.24
Larger deletions combined	3/3	58/58	61/61	100 (94.1–100)	1/1337	0/374	1/1711	0.06 (0.0–0.3)

Samples for which the algorithm did not produce a result were not included.

CI, confidence interval.

Wapner. Noninvasive screening for fetal microdeletion syndromes. *Am J Obstet Gynecol* 2014.

2.91Mb in the 22q11.2 region and 1152 SNPs in each of the other regions, targeting 5.85 Mb in the Prader-Willi/Angelman region, 10.0 Mb in the 1p36 region, and 20.0 Mb in the cri-du-chat region). The assay was not validated for the smaller, less-frequent deletions that are associated with these disorders because positive control samples were not available. The estimated relative prevalence of the targeted deletions in the 22q11.2, Prader-Willi/Angelman, 1p36, and cri-du-chat regions were 87%, 28%, 60%, and 65%, respectively. Samples were analyzed with the NATUS algorithm as previously described,^{9–13} and all samples that passed quality control (QC) were included in this cohort. The NATUS algorithm was then used to predict fetal copy number (1, 2, or ≥ 3 copies) for the microdeletion regions-of-interest. The algorithm was blinded to sample status, and all calls were reported as predicted by the algorithm without subjective modification by laboratory personnel.

RESULTS

Algorithm validation using genomic samples

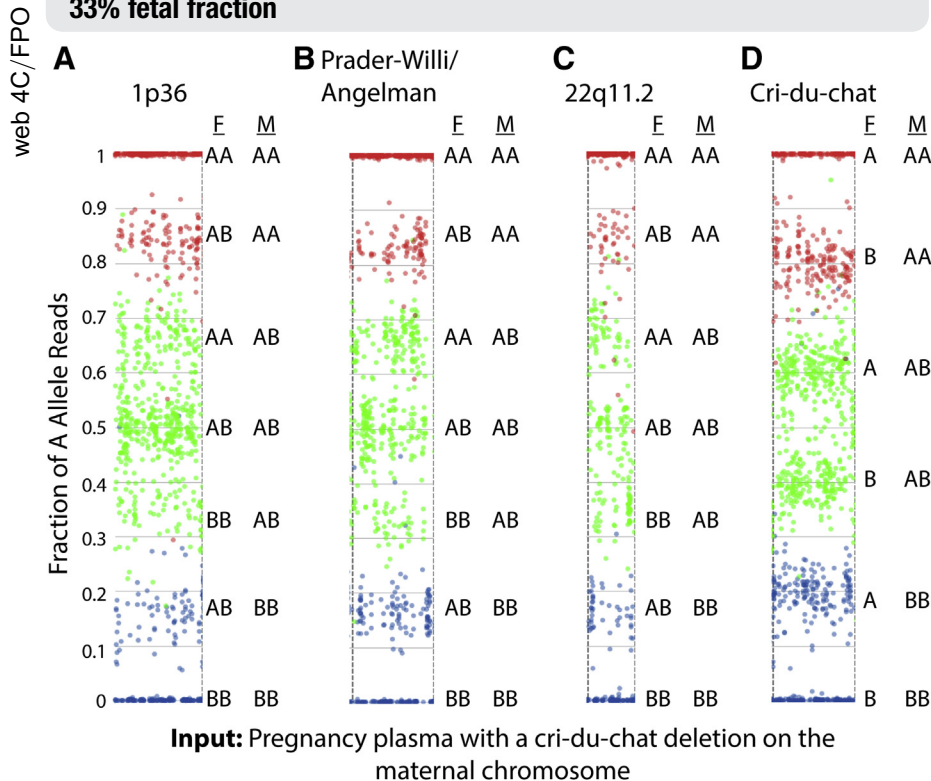
Validation experiments confirmed that the SNP-based technology and the microdeletion-specific primer pools could detect the microdeletions accurately in the 5 syndromes described. Heterozygous SNPs clearly were absent in all affected regions and were present in all unaffected regions; Figure 2 shows the graphic representations of the sequencing data that were obtained from genomic DNA that had been isolated from 1 cell line with a 22q11.2 deletion. The plots are described in detail in the Figure legend. Briefly, the absence of the central green cluster in the 22q11.2 (DiGeorge) region indicated a lack of heterozygous SNPs, from which it is possible to infer a deletion of 1 copy of the DNA in this region.

Pregnancy plasma cohort

Of the 358 pregnancy samples, 335 samples passed QC metrics. The algorithm did not return a result for 23 of 358 of the samples (6.4%); all of these

FIGURE 3

Graphic representation of 1 cri-du-chat deletion pregnancy plasma with 33% fetal fraction



Single-nucleotide polymorphism (SNP) data are represented as described in Figure 2. In this case, spots are colored according to maternal genotype: SNPs for which the mother is homozygous for the A allele (AA) are indicated with *red*; SNPs for which the mother is homozygous for the B allele (BB) are indicated with *blue*, and SNPs for which the mother is heterozygous (AB) are indicated in *green*. Because plasma cell-free DNA is a mixture of fetal and maternal cell-free DNA, the vertical position of each spot represents the sum of the contribution of both fetal and maternal allele reads and is a function of the fetal fraction. Because most plasma cell-free DNA is maternal in origin, the spots mainly distribute according to maternal genotype. The contribution of fetal allele reads results in segregation into distinct subclusters. Fetal and maternal genotypes at individual SNPs are indicated with *F* and *M*, respectively, to the right of the plots. **A-C**, SNP plots reveal 2 fetal copies in the 1p36, Prader-Willi/Angelman, and 22q11.2 regions. The presence of 3 green clusters in the center of the plot (centered on 0.335, 0.50, and 0.665), and the presence of 2 red (centered on 1 and 0.835) and 2 blue (centered on 0 and 0.165) clusters, indicate the presence of 2 fetal chromosomes in the interrogated regions. **D**, SNP plots reveal 1 fetal copy of the cri-du-chat region. The center trio of green clusters is replaced with a duo of clusters (centered on 0.4 and 0.6), and the peripheral red and blue clusters have shifted towards the center of the plot (centered on 0.2 and 0.8, respectively). Together, this indicates the presence of a deletion on the maternal chromosome in the cri-du-chat region.

Wapner. Noninvasive screening for fetal microdeletion syndromes. *Am J Obstet Gynecol* 2014.

were unaffected. The detection rates and false-positive rates for those samples that passed QC are listed in Table 2. Of the 6 affected pregnancy plasmas, 1 false negative was reported (22q11.2). Of the 335 unaffected pregnancy plasmas that passed QC, 4 false positives were

reported (3 for the 22q11.2 deletion and 1 for the deletion associated with cri-du-chat syndrome). Figure 3 shows a sample with a fetal fraction of 33% having a cri-du-chat deletion on the maternally inherited chromosome 5. In this sample, 2 green clusters in the cri-du-chat region

indicate a deletion; 3 green clusters in the 1p36, Prader-Willi/Angelman, and 22q11.2 regions indicate that 2 copies of the fetal chromosomes are present. The patterns are described in detail in the Figure legend.

Artificial mixtures (PlasmArt)

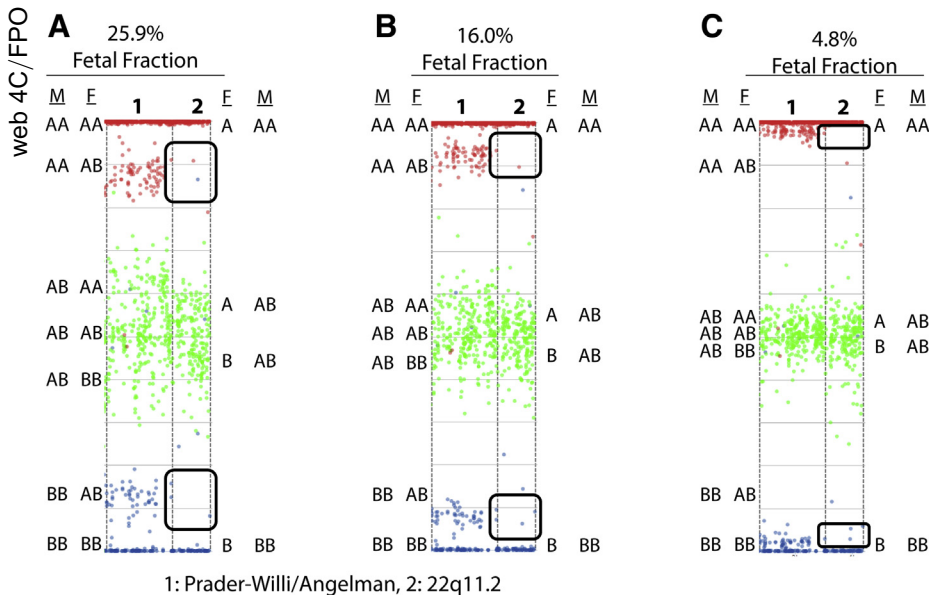
In the cohort of 111 PlasmArt samples, 108 samples passed QC metrics. The 3 samples that did not pass (1 Angelman, 1 22q11.2 deletion, 1 Prader-Willi) were due to low algorithm-generated confidence for the chromosome region of interest (1 Angelman), no-call for the chromosome region of interest (1 22q11.2 deletion), or a fetal fraction below the threshold where the algorithm makes a high-confidence copy number call (1 Prader-Willi). The detection rates and false-positive rates for the samples that passed QC are presented in Table 2.

Figure 4 shows a 22q11.2 deletion on the paternal copy of chromosome 22 that was detected from a set of PlasmArt samples with fetal fractions that ranged from 25.9–4.8%. The absence of the peripheral red and blue clusters where the maternal genotype is homozygous (AA or BB) is the hallmark pattern of a deletion on the paternal copy of the chromosome. The deletion is detectable visually as low as 4.8% fetal fraction (Figure 4).

COMMENT

We have demonstrated accurate detection of the 22q11.2, 1p36, cri-du-chat, and Prader-Willi/Angelman microdeletions using a SNP-based NIPT approach. Using a large cohort of unaffected samples and artificial PlasmArt mixtures that closely mimic the size profile and fetal fraction distribution of cfDNA that is found in pregnancy plasmas, we were able to estimate sensitivities and specificities for this assay for the microdeletion syndromes that were studied. For evaluations carried out at the 22q11.2 locus, in which the number of SNPs targeted was less than for other locations, we were able to identify the presence of a deletion in 45 of 46 samples with the deletion and absence in 394 of 397 unaffected samples (Table 2). For the other 4 loci, all of

FIGURE 4
Graphic representation of PlasmArt samples



Input: PlasmArt samples with a 22q11.2 (Di George) deletion on the paternal chromosome

Representation with a 22q11.2 deletion on the paternal chromosome at **A**, 25.9% fetal fraction, **B**, 16.0% fetal fraction, and **C**, 4.8% fetal fraction. All PlasmArt samples depicted here were generated from genomic DNA from the same mother-child pair. Three representative plots are depicted to illustrate microdeletion detection across a wide range of fetal fractions. Single-nucleotide polymorphism (SNP) data are represented here as described in Figures 2 and 3. Genomic DNA that represents the fetus and mother are indicated by *F* and *M*, respectively. Plots represent the Prader-Willi/Angelman deletion region (as indicated with 1 above the plots) and the 22q11.2 deletion region (as indicated with 2 above the plots). Genotypes of the Prader-Willi/Angelman region are indicated to the left; genotypes of the 22q11.2 region are indicated to the right. The deletion on the paternal copy of chromosome 22 in the 22q11.2 region is most clearly indicated by the red and blue peripheral subclusters. **A**, At fetal fractions of above approximately 20%, the presence of 3 green subclusters in the center of the plot (centered around 0.63, 0.50, and 0.37) with 2 red (around 1 and 0.87), and 2 blue (around 0 and 0.13) subclusters indicates the presence of 2 fetal chromosomes in the Prader-Willi/Angelman region. By contrast, in the 22q11.2 region, the center trio of green subclusters has condensed into a duo of clusters (centered on 0.57 and 0.43), and the internal peripheral red and blue clusters are absent (as indicated by *black boxes*). Together, this indicates a single fetal chromosome in the 22q11.2 region. **B,C**, At fetal fractions of less than approximately 20% in both the Prader-Willi/Angelman and 22q11.2 regions, the center green subclusters condense towards the center of the plot and become difficult to distinguish by eye. In the Prader-Willi/Angelman regions, the internal peripheral red and blue subclusters regress towards the plots' upper and lower limits, respectively. In the 22q11.2 regions, the absence of the internal peripheral red and blue subclusters in the 22q11.2 regions, which indicates a deletion on the paternal chromosome, is still readily apparent (as indicated by *black boxes*), even at fetal fractions as low as 4.8%.

Wapner. Noninvasive screening for fetal microdeletion syndromes. *Am J Obstet Gynecol* 2014.

which targeted the same number of polymorphic loci, deletions were detected in 61 of 61 affected samples and 1 of 1711 unaffected samples.

In clinical practice, samples that do not return a result (no calls) for ≥ 1 microdeletions are unlikely to be

redrawn because of the low previous risk. Under the conservative assumption that such cases would be treated as low risk (negative), the effective detection and false-positive rates for the 22q11.2 deletion would be 45 of 47 and 3 of 422, respectively, and 61 of 63 and 1 of 1813,

respectively, for the larger deletions combined (Table 3). Our results suggest that screening for this set of 5 microdeletions could be added to existing NIPT for fetal aneuploidy with a minimal combined incremental false-positive rate of approximately 0.8% (Table 3).

When we combined the data for maternal plasma samples and the PlasmArt samples, the detection rate for 22q11.2 deletions was 45 of 46 (97.8%), and the false-positive rate was 3 of 397 (0.76%; Table 2). Based on a deletion prevalence of 1 of 2000 in the general population, an estimate that the 3-Mb deletion constitutes 87% of all 22q11.2 deletions,²⁷ and the conservative assumption that this test will not identify any of the other variant deletions, the results would translate into a positive predictive value of approximately 5.3% and a negative predictive value of approximately 99.99% (Table 4).

For the other deletion syndromes (which, in general, constitute larger genomic regions with more SNPs within each region), the combined detection rate was 61 of 61 (100%), and the false-positive rate was 1 of 1711 (0.06%; Table 2). These combined rates were used to estimate positive and negative predictive values for each disorder (Table 4). The deletions included in this study constitute almost 70% of the causal mutations in the 5 syndromes. The positive predictive value conservatively assumed that none of the other variant deletions in patients with these disorders would be identified and also that uniparental disomy would not be recognized. In practice, because some of the other deletions that are seen in these disorders can be large and because uniparental disomy is expected to be recognized, it is likely that $>70\%$ of affected pregnancies would be found. Further, it is possible that this assay could detect smaller deletions. Thus, the detection rates described here are considered to be a conservative indication of what could be expected in a clinical setting. To further improve the positive predictive value, reflex testing of samples found to be high risk to higher depth of read currently is being investigated.

TABLE 3

Combined detection rate and false-positive rate for pregnancy plasmas and PlasmArt samples

Variable	Effective detection rate ^a		Net detection rate, ^b %	False-positive rate		
	n/N	95% CI		n/N	%	95% CI
22q11.2 del	45/47	95.7: 85.5–99.5	83.3	3/422	0.71	0.1–2.1
Larger deletions combined	61/63	96.8: 89.0–99.6	45.5	1/1813	0.06	0.0–0.3

Samples for which the algorithm did not receive a result are treated conservatively as negatives.

CI, confidence interval.

^a Detection rates for the specific detected deletions; ^b Net detection rates for each syndrome that take into account the prevalence of each detected deletion.

Wapner. Noninvasive screening for fetal microdeletion syndromes. *Am J Obstet Gynecol* 2014.

Our initial studies have focused on 5 microdeletion syndromes that collectively have a population incidence of approximately 1 in 1000. These disorders are associated with significant morbidity and mortality rates and includes intellectual disability.^{14,30,31} Additionally, the SNP method that was used distinguishes between a deletion that has arisen on a paternally vs a maternally inherited chromosome, which will facilitate clinical interpretation when an imprinted gene is involved, such as Prader-Willi or Angelman syndrome, even though patients with these disorders can have identical chromosome 15 deletions.³² It should be recognized that, for patients who seek comprehensive diagnostic testing, chromosomal microarray analysis is the gold standard. However, for patients who want information about

the genetic status of their fetus but who desire to avoid invasive testing, NIPT with broad clinical coverage can be an appropriate first step.

A noninvasive screening test for a defined set of submicroscopic copy number variants allows a focus on the common recurrent changes that are known to be associated with well-defined phenotypes. The phenotypes associated with copy number variants in other genomic regions are becoming increasingly well-defined, which supports their addition to a screening approach. However, because each copy number variant will be rare, it is important that the false-positive rate for each is very low. Our study shows that this can be achieved while retaining a high positive predictive value (Table 4).

A significant limitation of this study was the lack of sufficient maternal plasma samples from affected pregnancies at appropriate gestational ages. Because these disorders are relatively rare and because prenatal screening for these disorders is unprecedented, it was not possible to conduct a large-scale study on patient samples. To partially overcome this limitation, we generated artificial pregnancy plasma mixtures, termed *PlasmArts*, over an appropriate range of fetal DNA concentrations. The value of the PlasmArt approach is based on a number of observations. Plasma cfDNA is known to consist of both maternal and fetal fragments. The fetal fragments are mainly mononucleosomal^{26,33} that are generated during placental apoptosis³⁴ and, as such, have specific cleavage sites. Maternal mononucleosomal fragments are approximately 23 nucleotides longer than fetal fragments,^{26,33,35,36} and maternal cfDNA is known to consist of a nucleosomal ladder.²⁶ Additionally, both the fetal and maternal DNA fragments are thought to have associated proteins. Thus, the enzymatic fragmentation and “fetal” DNA size purification used in this study is expected to be superior to the use of sonication,²¹ in that it creates fragments similar to those observed in vivo. Additionally, this method will leave proteins intact, in contrast to sonication, which denatures proteins; however, whether this affects cfDNA-based detection of CNVs has not been determined. Research is ongoing to further validate the PlasmArt method as a model for clinical samples.

TABLE 4

Positive predictive value and negative predictive value

Disorder	Incidence (1:n)	Frequency of deletion evaluated	Positive predictive value, ^a %	Negative predictive value, ^b %
22q11.2 del	2000	0.87	5.3	>99.99
Prader-Willi	10,000	0.28	4.6	>99.99
Angelman	12,000	0.28	3.8	>99.99
1p36 del	5000	0.60	17.0	>99.99
Cri-du-chat	20,000	0.65	5.3	>99.99

^a Calculated by multiplying population incidence, the frequency of the deletion evaluated, and the positive likelihood ratio (detection rate/false-positive rate); ^b Calculated by multiplying population incidence, the frequency of the deletion evaluated, and the negative likelihood ratio [(1-detection rate)/(1-false-positive rate)].

Wapner. Noninvasive screening for fetal microdeletion syndromes. *Am J Obstet Gynecol* 2014.

783 The exact coordinates and size of
784 some copy number variants will differ
785 substantially between individuals.
786 Because of the rarity of positive control
787 samples, this cohort contained a limited
788 number of affected samples, including
789 the use of replicate PlasmArts that were
790 derived from the same mother-child
791 pairs. Further validation of this tech-
792 nology in a larger series is warranted.
793 Performance of this SNP-based method
794 for the detection of well-defined micro-
795 deletions is expected to depend primar-
796 ily on the number of informative SNPs in
797 each region of interest. Although this
798 may limit the detection capabilities for
799 small regions of interest, for larger
800 discrete abnormalities, it should offer a
801 robust and generalizable approach. In
802 other words, because performance is
803 related to the number of informative
804 SNPs in a target region, and not on the
805 identity of the SNPs, validation of rare
806 microdeletions should be possible
807 without the need to collect a large set of
808 positive controls for validation of each
809 microdeletion. Ongoing studies in the
810 clinical population, in which more
811 affected samples are available, will pro-
812 vide insights into the generalizability of
813 performance metrics for different
814 microdeletion syndromes.

815 Detection of fetal microdeletions has
816 been reported with methods that use
817 shotgun sequencing and counting DNA
818 fragments.^{20,21} Because these methods
819 amplify all chromosomes indiscrimin-
820 ately and because these deletion syn-
821 dromes affect <1% of the genome, large
822 numbers of sequence reads are required
823 for accurate detection of sub-
824 chromosomal anomalies.³⁷ In these
825 initial studies that used shotgun
826 sequencing, microdeletions were detec-
827 ted with the use of a depth of sequencing
828 between 2.4×10^8 and 1.3×10^9
829 sequence reads,^{21,38} which is substan-
830 tially higher than that currently used for
831 aneuploidy detection. The method re-
832 ported here achieved high sensitivity and
833 specificity with an average of only $8.9 \times$
834 10^6 mapped reads, which demonstrates 1
835 of the significant advantages of this tar-
836 geted sequencing approach. Also, non-
837 targeted sequencing will identify variants
838 of unknown significance,^{22,23} which will

increase the need for invasive testing and
can present counseling dilemmas. Alternatively, the SNP-based method can target specific regions with well-described phenotypes. Although this SNP-based approach offers a number of benefits over counting methods, there are some limitations to this approach. The SNP method requires a longer polymerase chain reaction process, and, as of now, this assay is not appropriate for egg donors.

This report describes the identifica-
tion of 5 well-defined microdeletion
syndromes through noninvasive
methods. This next-generation SNP-
and NATUS-based NIPT approach
routinely identified 22q11.2, 1p36, cri-
du-chat, Prader-Willi, and Angelman
microdeletions with a low rate of
screen positive results. The fact that
clinically relevant microdeletions and
duplications occur in >1% of preg-
nancies, regardless of maternal age,
challenges the notion of “low-risk
pregnancies”¹⁴ and suggests that offer-
ing NIPT-based microdeletion
screening to the general pregnancy
population may be appropriate. Although this report demonstrates the technical ability to identify microdeletions, widespread implementation will require education of care givers and appropriate counseling of patients. Counseling should include the performance and scope of the testing, information about the frequency and phenotype of the disorders, and the fact that testing is voluntary. We recognize that additional validation studies are needed to provide greater confidence in this screening test.

Overall, these genomic alterations
occur more frequently than those pre-
sented screened for, such as Down syn-
drome; many microdeletion syndromes,
including those in our study, have severe
phenotypes. As the technology im-
proves, other microdeletions and dupli-
cations should also be identifiable by
noninvasive testing. Although some of
these may have less severe phenotypes,
knowledge of them will allow early in-
terventions, which have been shown to
improve greatly a child’s develop-
ment.¹⁵⁻¹⁷ ■

UNCITED REFERENCES

28,29.

ACKNOWLEDGMENTS

The authors thank Dr David Ledbetter for critical input on the manuscript and Bin Hoang, Christina Ng, Ayupe Obad, Dr Eser Kirkizlar, Dr Svetlana Shchegrova, Dr Dusan Kijacic, and Akshita Kalyan for sample processing and excellent technical support.

REFERENCES

1. Lo YM, Corbetta N, Chamberlain PF, et al. Presence of fetal DNA in maternal plasma and serum. *Lancet* 1997;350:485-7.
2. Kazakov VI, Bozhkov VM, Linde VA, Repina MA, Mikhailov VM. [Extracellular DNA in the blood of pregnant women]. *Tsitologiya* 1995;37:232-6.
3. Chitty LS, Bianchi DW. Noninvasive prenatal testing: the paradigm is shifting rapidly. *Prenatal Diagnosis* 2013;33:511-3.
4. Benn P, Cuckle H, Pergament E. Non-invasive prenatal testing for aneuploidy: current status and future prospects. *Ultrasound Obstet Gynecol* 2013;42:15-33.
5. Palomaki GE, Kloza EM, Lambert-Messerlian GM, et al. DNA sequencing of maternal plasma to detect Down syndrome: an international clinical validation study. *Genet Med* 2011;13:913-20.
6. Sparks AB, Struble CA, Wang ET, Song K, Oliphant A. Noninvasive prenatal detection and selective analysis of cell-free DNA obtained from maternal blood: evaluation for trisomy 21 and trisomy 18. *Am J Obstet Gynecol* 2012;206:319.e1-9.
7. Bianchi DW, Platt LD, Goldberg JD, Abuhamad AZ, Sehnert AJ, Rava RP. Genome-wide fetal aneuploidy detection by maternal plasma DNA sequencing. *Obstet Gynecol* 2012;119:890-901.
8. Levy B, Norwitz E. Non-invasive prenatal aneuploidy testing: technologies and clinical implication. *MLO Med Lab Obs* 2013;45:8, 10, 12 passim; quiz 16.
9. Nicolaidis KH, Syngelaki A, Gil M, Atanasova V, Markova D. Validation of targeted sequencing of single-nucleotide polymorphisms for non-invasive prenatal detection of aneuploidy of chromosomes 13, 18, 21, X, and Y. *Prenat Diagn* 2013;33:575-9.
10. Pergament E, Cuckle H, Zimmermann B, et al. Single-nucleotide polymorphism-based non-invasive prenatal testing in a high- and low-risk cohort. *Obstet Gynecol* 2014;124:210-8.
11. Nicolaidis K, Syngelaki A, Gil M, Quezada M, Zinevich Y. Prenatal detection of fetal triploidy from cell-free DNA testing in maternal blood. *Fetal Diagn Ther* 2014;35:212-7.
12. Samango-Sprouse C, Banjevic M, Ryan A, et al. SNP-based non-invasive prenatal testing

- 895 detects sex chromosome aneuploidies with high
896 accuracy. *Prenat Diagn* 2013;33:643-9.
- 897 **13.** Hall MP, Hill M, Zimmermann PB, et al.
898 Non-invasive prenatal detection of trisomy 13
899 using a single nucleotide polymorphism- and
900 informatics-based approach. *PLoS One*
901 2014;9:e96677.
- 902 **14.** Wapner RJ, Martin CL, Levy B, et al. Chro-
903 mosomal microarray versus karyotyping for
904 prenatal diagnosis. *N Engl J Med* 2012;367:
905 2175-84.
- 906 **15.** Council NR. Educating children with autism.
907 Washington, DC: National Academies Press;
908 Q9 ••••.
- 909 **16.** Handleman JS, Harris SC. Preschool edu-
910 cation programs for children with autism. Austin,
911 TX: Pro ed; ••••.
- 912 **17.** Cheung ENM, George SR, Costain GA, et al.
913 Prevalence of hypocalcemia and its associated
914 features in 22q11.2 deletion syndrome. *Clin*
915 *Endocrinol (Oxf)* 2014;81:190-6.
- 916 **18.** American College of Obstetricians and Gy-
917 necologists. The use of chromosomal micro-
918 array analysis in prenatal diagnosis. ACOG
919 Practice Bulletin no. 581. *Obstet Gynecol*
920 2013;122:1374-7.
- 921 **19.** American College of Obstetricians and Gy-
922 necologists. Invasive prenatal testing for aneu-
923 ploidy. ACOG Practice Bulletin no. 88. *Obstet*
924 *Gynecol* 2007;110:1459-67.
- 925 **20.** Jensen TJ, Dzakula Z, Deciu C, van den
926 Boom D, Ehrich M. Detection of microdeletion
927 22q11.2 in a fetus by next-generation
928 sequencing of maternal plasma. *Clin Chem*
929 2012;58:1148-51.
- 930 **21.** Srinivasan A, Bianchi DW, Huang H,
931 Sehntert AJ, Rava RP. Noninvasive detection of
932 fetal subchromosome abnormalities via deep
933 sequencing of maternal plasma. *Am J Hum*
934 *Genet* 2013;92:167-76.
- 935 **22.** Kitzman JO, Snyder MW, Ventura M, et al.
936 Noninvasive whole-genome sequencing of
937 a human fetus. *Sci Transl Med* 2012;4:
938 137ra76.
- 939 **23.** Fan HC, Gu W, Wang J, Blumenfeld YJ,
940 El-Sayed YY, Quake SR. Non-invasive prenatal
941 measurement of the fetal genome. *Nature*
942 2012;487:320-4.
- 943 **24.** Spetman BL, Leuking S, Roberts B,
944 Dennis J. Microarray mapping of nucleosome
945 position. In: Craig J, Wong N, eds. *Epigenetics: a*
946 *reference manual*. Norwich, UK: Horizon Scien-
947 tific Press; 2011. ••••.
- 948 **25.** Axel R. Cleavage of DNA in nuclei and
949 chromatin with staphylococcal nuclease.
950 *Biochemistry* 1975;14:2921-5.
- 951 **26.** Chan KCA, Zhang J, Hui ABY, et al. Size
952 distributions of maternal and fetal DNA
953 in maternal plasma. *Clin Chem* 2004;50:
954 88-92.
- 955 **27.** Shaikh TH, Kurahashi H, Saitta SC, et al.
956 Chromosome 22-specific low copy repeats and
957 the 22q11.2 deletion syndrome: genomic or-
958 ganization and deletion endpoint analysis. *Hum*
959 *Mol Genet* 2000;9:489-501.
- 960 **28.** Goldmuntz E, Clark BJ, Mitchell LE, et al.
961 Frequency of 22q11 deletions in patients with
962 conotruncal defects. *J Am Coll Cardiol* 1998;32:
963 492-8.
- 964 **29.** Goldmuntz E, Driscoll D, Budarf ML,
965 et al. Microdeletions of chromosomal region
966 22q11 in patients with congenital cono-
967 truncal cardiac defects. *J Med Genet*
968 1993;30:807-12.
- 969 **30.** Gross SJ, Bajaj K, Garry D, et al. Rapid and
970 novel prenatal molecular assay for detecting
971 aneuploidies and microdeletion syndromes.
972 *Prenat Diagn* 2011;31:259-66.
- 973 **31.** GeneTests. *GeneTests* (vol 2014). Q15 975
- 976 **32.** Buiting K. Prader-Willi syndrome and
977 Angelman syndrome. *Am J Medical Genet Part*
978 *C: Seminars in Medical Genetics* 2010;154C:
979 365-76.
- 980 **33.** Fan HC, Blumenfeld YJ, Chitkara U,
981 Hudgins L, Quake SR. Analysis of the size dis-
982 tributions of fetal and maternal cell-free DNA by
983 paired-end sequencing. *Clin Chem* 2010;56:
984 1279-86.
- 985 **34.** Li Y, Zimmermann B, Rusterholz C, Kang A,
986 Holzgreve W, Hahn S. Size separation of circu-
987 latory DNA in maternal plasma permits ready
988 detection of fetal DNA polymorphisms. *Clin*
989 *Chem* 2004;50:1002-11. Q12 964
- 990 **35.** Lo YM, Chan KC, Sun H, et al. Maternal
991 plasma DNA sequencing reveals the genome-
992 wide genetic and mutational profile of the fetus.
993 *Sci Transl Med* 2010;2:61ra91.
- 994 **36.** Zheng YWL, Chan KCA, Sun H, et al. Non-
995 hematopoietically derived DNA is shorter than
996 hematopoietically derived DNA in plasma: a
997 transplantation model. *Clin Chem* 2012;58:
998 549-58.
- 999 **37.** Benn P, Cuckle H. Theoretical performance
1000 of non-invasive prenatal testing for chromosome
1001 imbalances using counting of cell-free DNA
1002 fragments in maternal plasma. *Prenat Diagn* Q13 977
- 1003 2014;34:778-83.
- 1004 **38.** Peters D, Chu T, Yatsenko SA, et al.
1005 Noninvasive prenatal diagnosis of a fetal micro-
1006 deletion syndrome. *N Engl J Med* 2011;365:
1007 1847-8. Q14 981